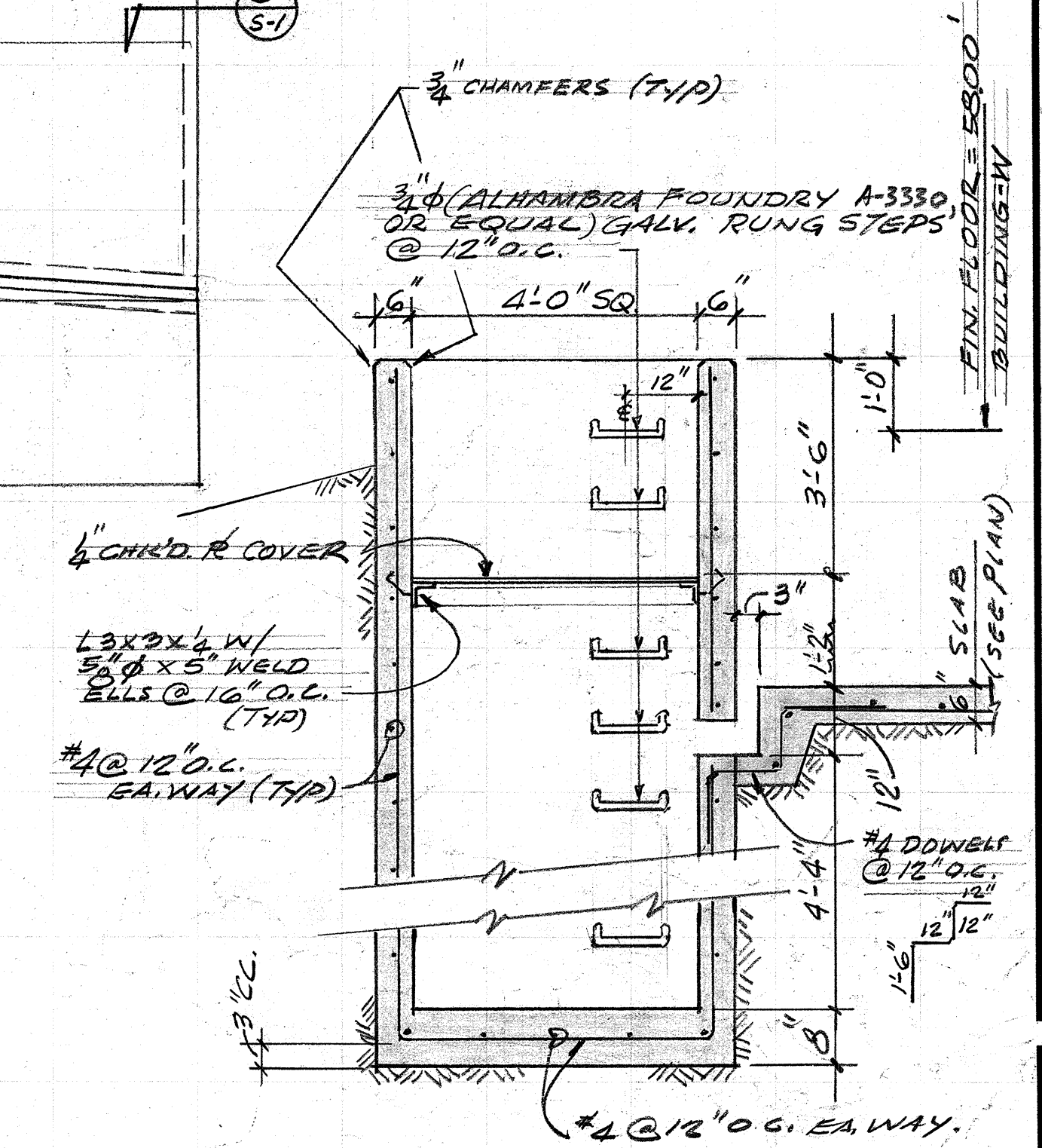
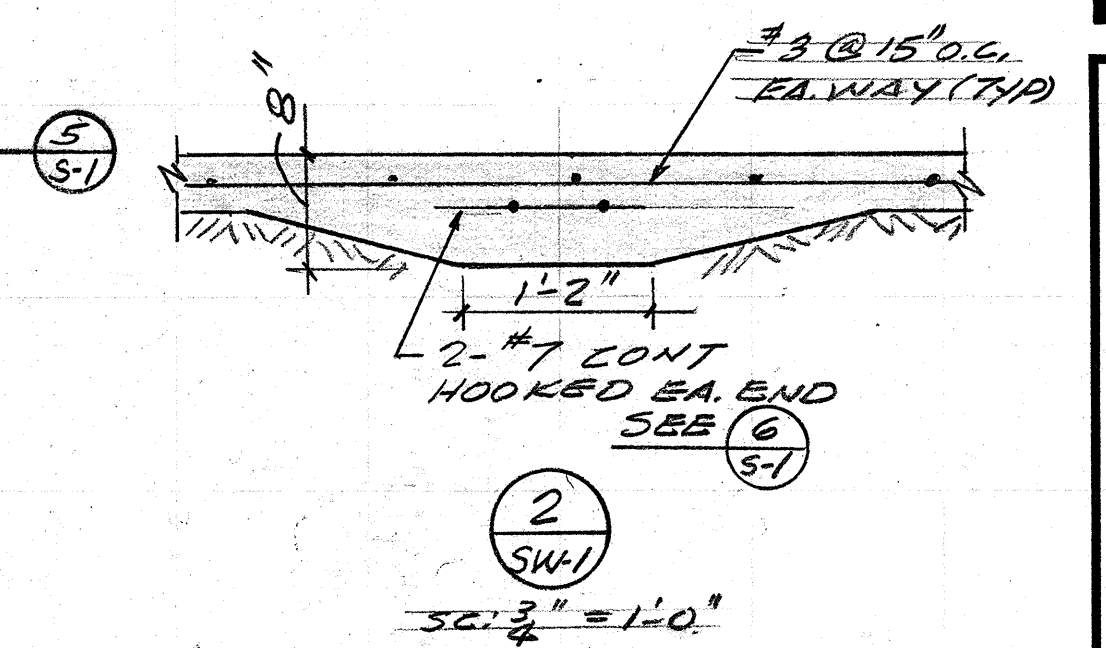
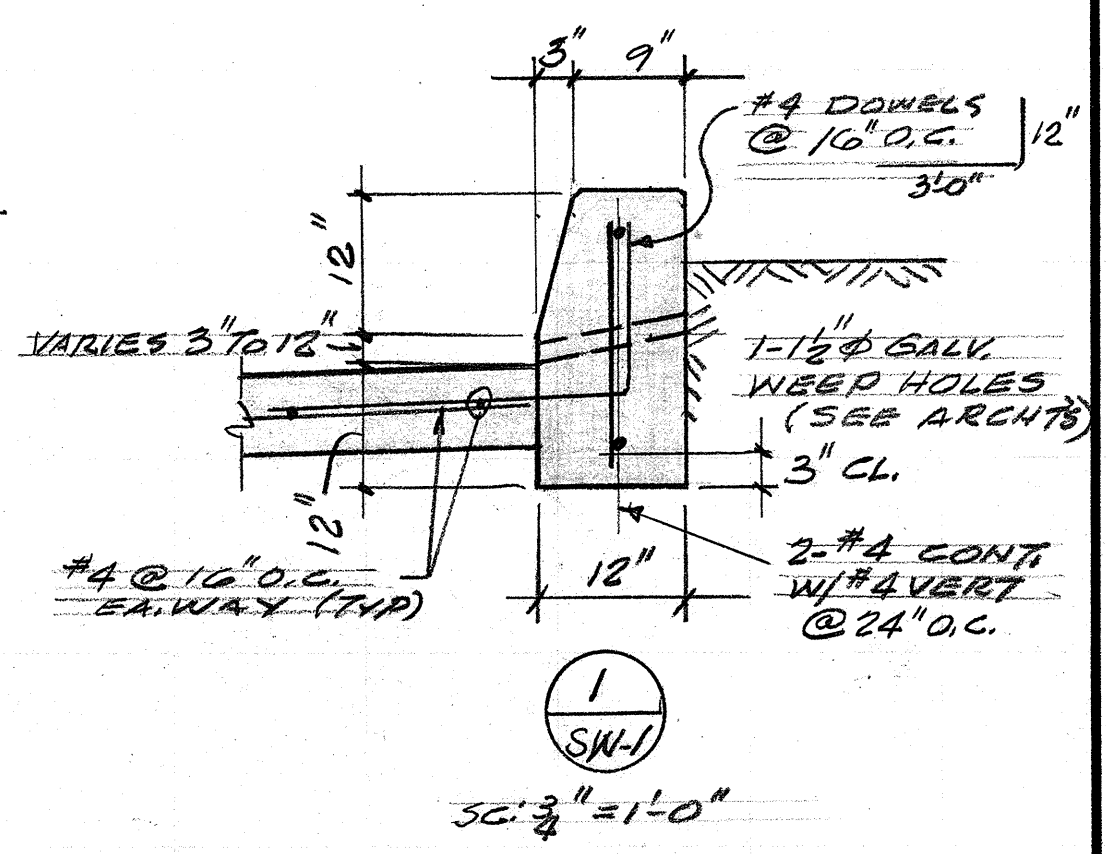


FOUNDATION PLAN - WAREHOUSE BUILDING
 S.C. 1/8" = 1'-0"



SUMP PIT (3) S.W. 1/2" = 1'-0"

CARMICHAEL-KEMP
 ARCHITECTS
 2870 LOS FELIZ PLACE - LOS ANGELES 666-1285

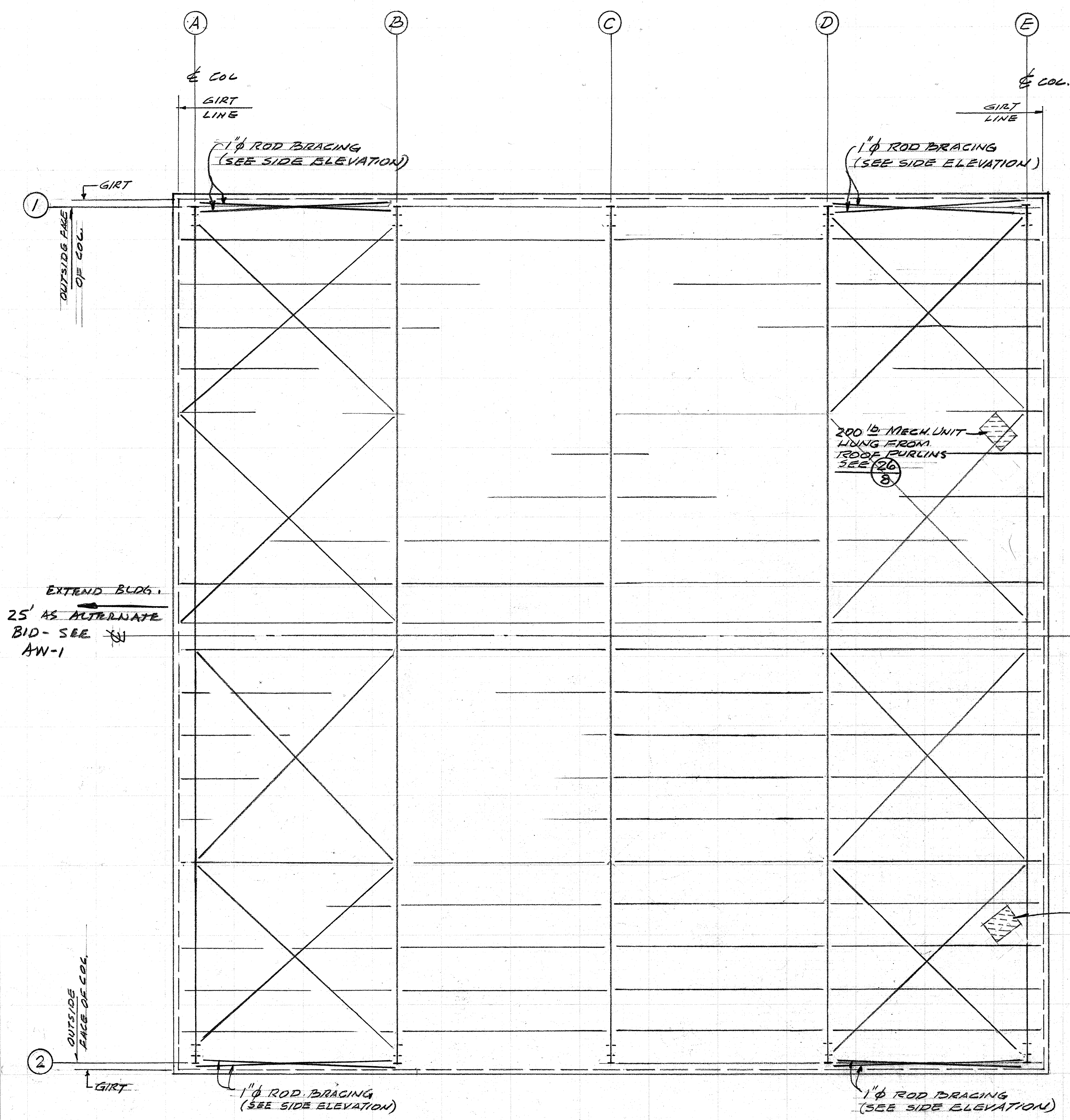


SCHOOL DISTRICT SHOPS
 MAINTENANCE - TRANSPORTATION - WAREHOUSE
 FOR
CHINO UNIFIED SCHOOL DISTRICT
 CHINO CALIFORNIA

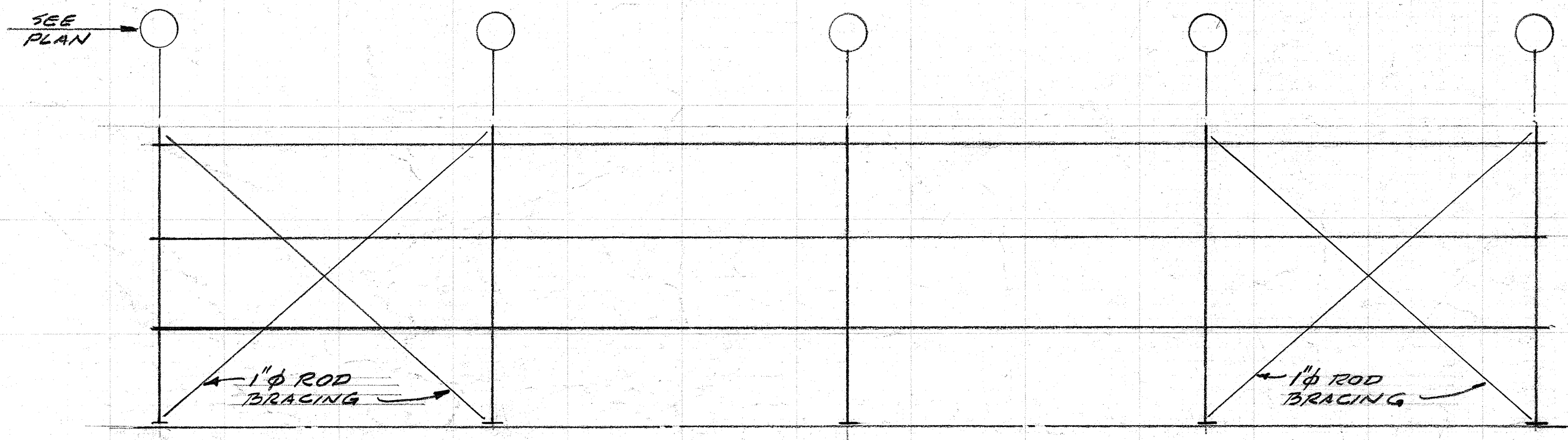
DEPT. OF GEN. SERVICES
 FIRE MARSHAL

BEN L. SCHMID
 STRUCTURAL ENGINEER
 2800 E. FOOTHILL BOULEVARD
 PASADENA, 91107 CALIFORNIA
 782-2019

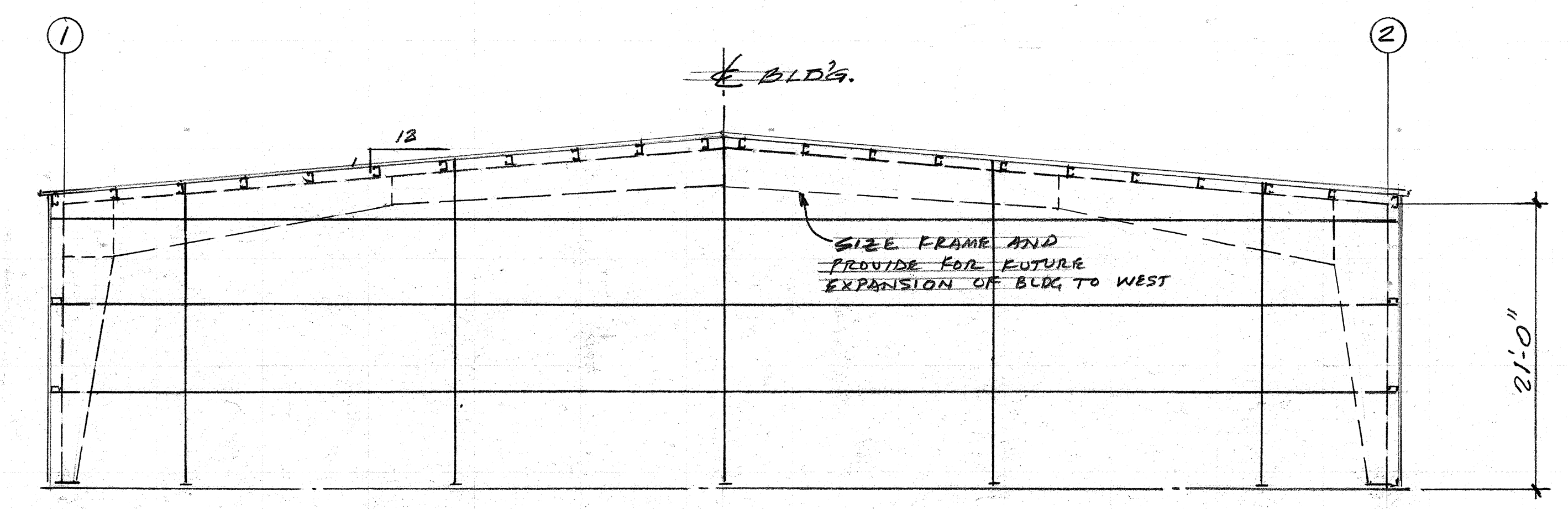
JOB NO. 7611-5
 DATE 3-25-81
 SHEET NUMBER
SW-1
 BINDING ORDER 37



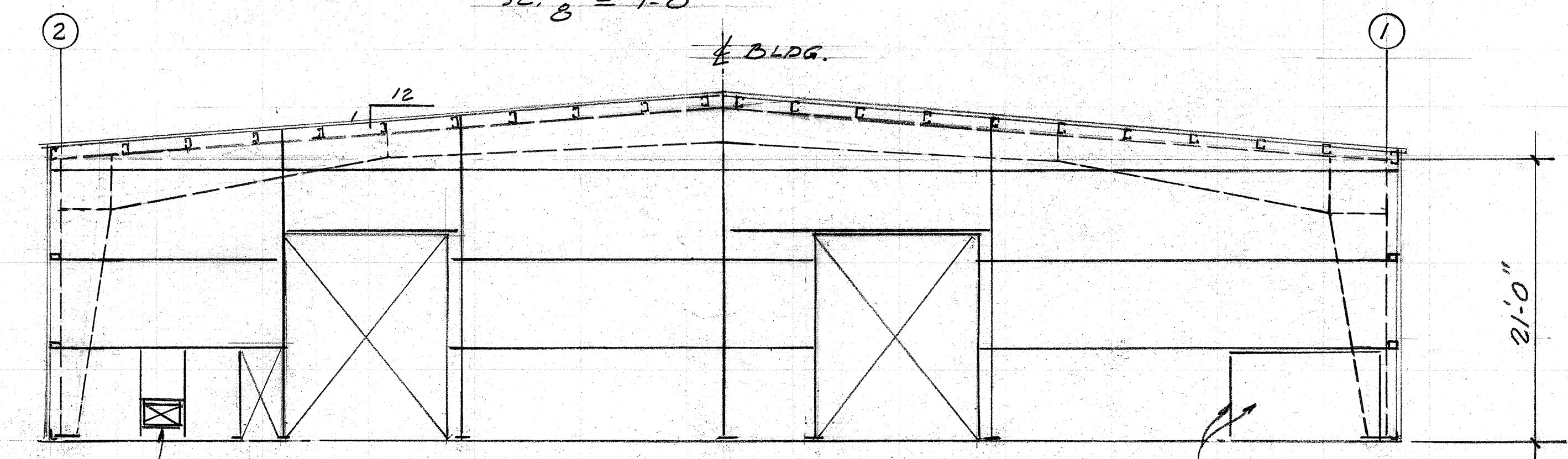
ROOF FRAMING PLAN - WAREHOUSE BUILDING
 SC: 1/8" = 1'-0"



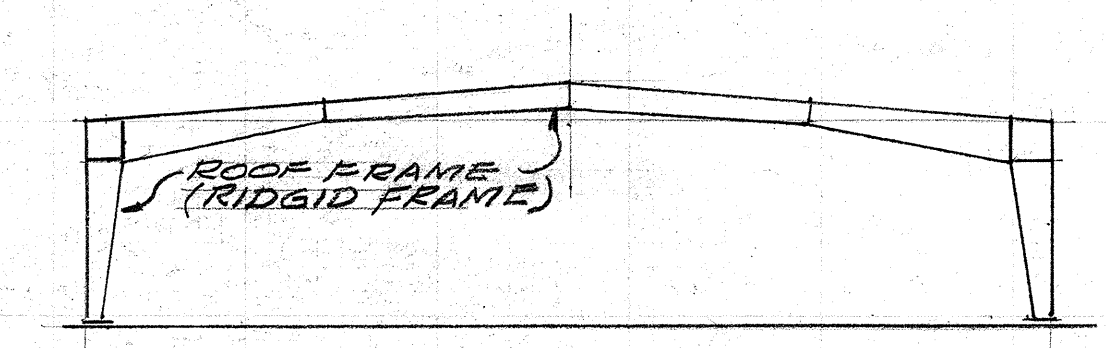
SIDE ELEVATION
 SC: 1/8" = 1'-0"



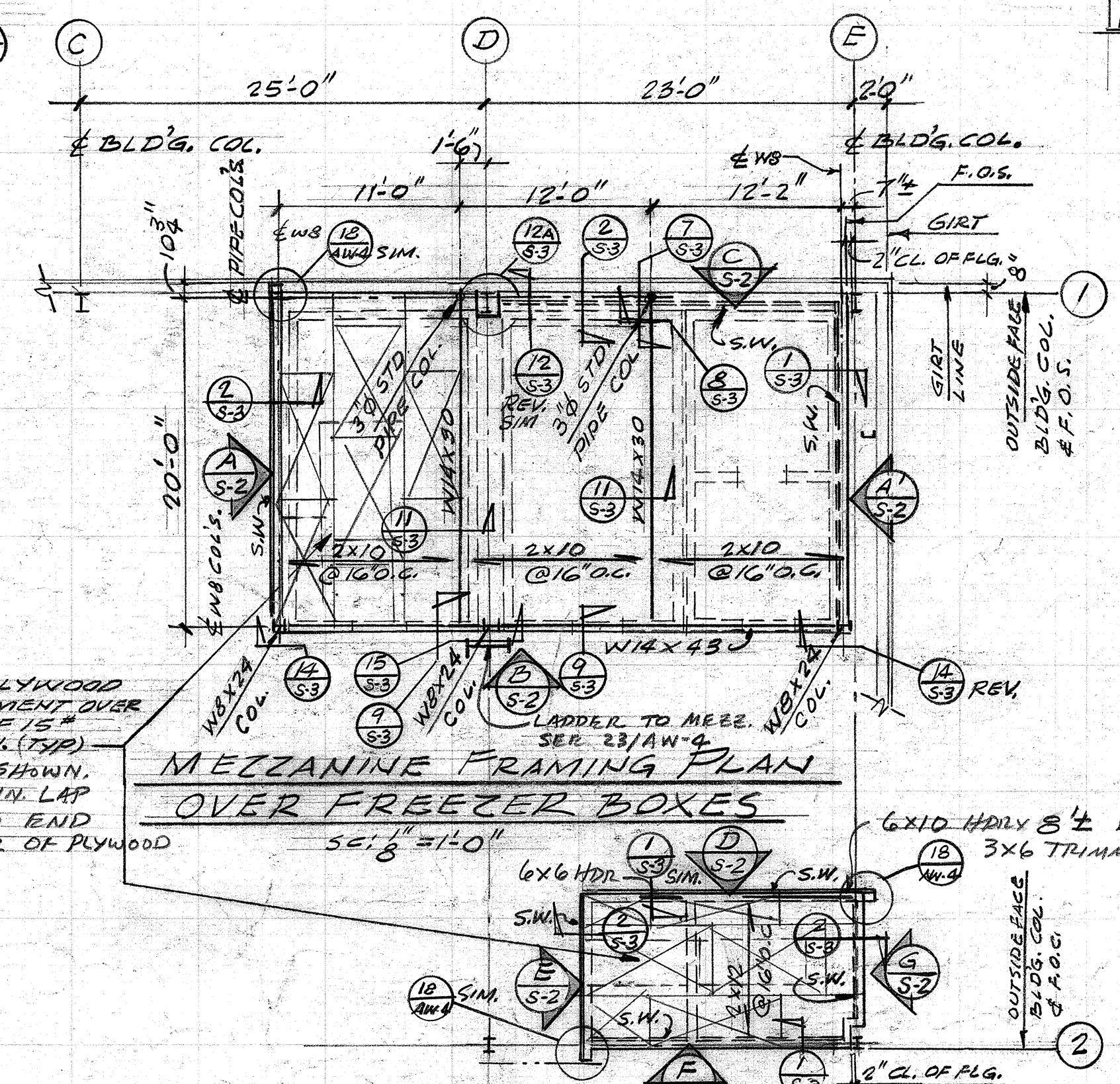
WEST ELEVATION
 SC: 1/8" = 1'-0"



EAST ELEVATION
 SC: 1/8" = 1'-0"



- RIGID FRAME LOADING:**
- DL + 20# L.L. (REDUCABLE BY TRIBUTARY AREA)
 - DL + 15# WIND TRIBUTARY AREA
 - DL + 186# G. SEISMIC, K=2
 - SUBMIT CALCULATIONS & DESIGN DWGS. FOR APPROVAL BEFORE FABRICATION.



MEZZANINE FRAMING PLAN OVER OFFICE & REST RM.
 SC: 1/8" = 1'-0"

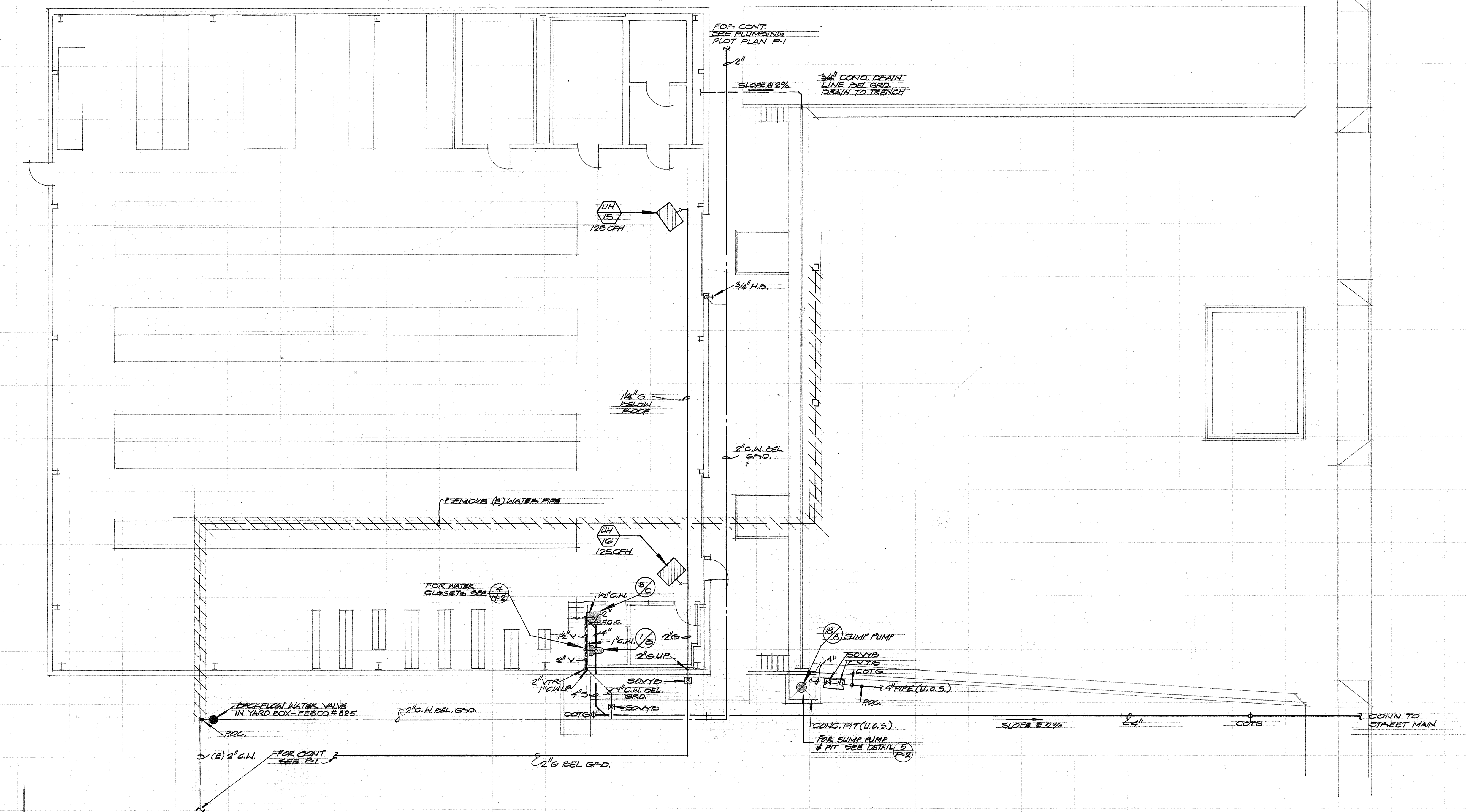
CARROLL KELLEY ARCHITECTS A.I.A.
 2810 LOS FELIZ PLACE - LOS ANGELES, 666-1785

CHINO UNIFIED SCHOOL DISTRICT
 CHINO, CALIFORNIA
 SCHOOL DISTRICT SHOPS
 MAINTENANCE - TRANSPORTATION - WAREHOUSE

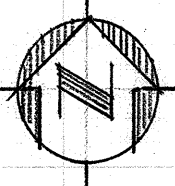
DEPT. OF GEN. SERVICES
 FIRE MARSHAL

BEN L. SCHMID
 2500 E. Foothill Boulevard
 Pasadena, 91107 California
 789-2819 684-0562

JOB NO. 7611-5
 DATE 2-25-81
 SHEET NUMBER
SW-2
 BINDING ORDER 38



A
PW-1
PLUMBING FLOOR PLAN
 SCALE 1/8" = 1'-0"



FOR CONT.
 SEE PLUMBING
 FLOOR PLAN PW-1

2" V.
 SLOPE @ 2%
 3/4" COND. DRAIN
 LINE DEL. GND.
 DRAIN TO TRENCH

1/4" V.
 125 CFH

3/4" H.D.

1/4" G.
 BELOW
 ROOF

2" G.W. DEL.
 G.F.D.

REMOVE (5) WATER PIPE

1/4" V.
 125 CFH

FOR WATER
 CLOSETS SEE
 PW-2

1/4" G.W.

2" V.

2" V.

2" V.

2" V.

2" V.

2" V.

2" V.

2" V.

2" V.

2" V.

2" V.

2" V.

2" V.

2" V.

2" V.

2" V.

2" V.

2" V.

2" V.

2" V.

2" V.

2" V.

1/4" V.
 125 CFH

2" V.

2" V.

2" V.

2" V.

2" V.

2" V.

2" V.

2" V.

2" V.

2" V.

2" V.

2" V.

2" V.

2" V.

2" V.

2" V.

2" V.

2" V.

2" V.

2" V.

2" V.

CONG. PIT (U.O.S.)
 FOR SUMP PUMP
 # PIT SEE DETAIL (B.2)

SLOPE @ 2%

2" V.

COTE

CONN TO
 STREET MAIN

CHARMICHAELE-KEMP
 ARCHITECTS
 A.I.A.



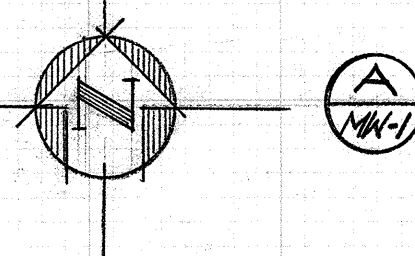
SCHOOL DISTRICT SHOPS
 MAINTENANCE - TRANSPORTATION - WAREHOUSE
 FOR
 CHINO UNIFIED SCHOOL DISTRICT
 CALIFORNIA

DEPT. OF GEN. SERVICES
 FIRE MARSHAL

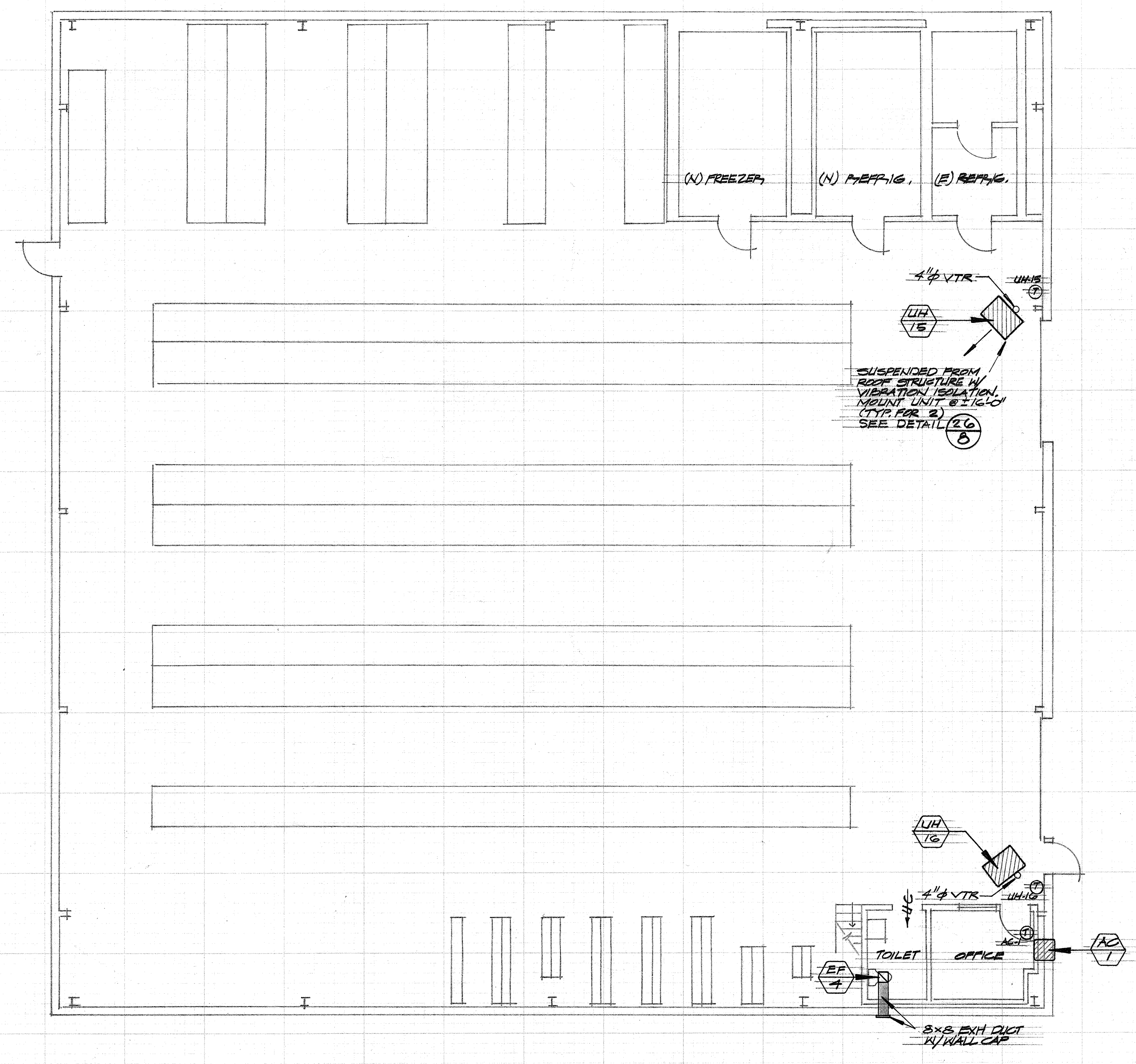
MECHANICAL ENGINEER
 Albert C. Chu
 ALBERT C. CHU
 2870 LOS FELIZ PLACE
 LOS ANGELES, CA 90039
 PHONE (213) 666-1255
 LICENSE NO. M10919

JOB NO. 7611-5
 DATE 2-25-81
 SHEET NUMBER
PW-1
 BINDING ORDER 43

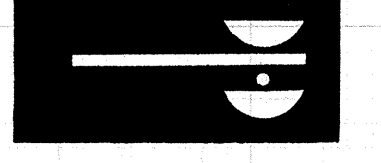
PRINTED ON CLEARPRINT



AIR CONDITIONING FLOOR PLAN
SCALE 1/8" = 1'-0"



CHARMICHHELL-KEMP
ARCHITECTS
P.S.
A.I.A.
2870 LOS FELIZ PLACE - LOS ANGELES - 90066-1785



SCHOOL DISTRICT SHOPS
MAINTENANCE - TRANSPORTATION - WAREHOUSE
FOR
CHINO UNIFIED SCHOOL DISTRICT
CHINO CALIFORNIA

DEPT. OF GEN. SERVICES
FIRE MARSHAL

MECHANICAL ENGINEER
Albert C. Chu
ALBERT C. CHU
2870 LOS FELIZ PLACE
LOS ANGELES, CA 90039
PHONE (213) 666-1609
LICENSE NO. M11609

JOB NO. 7611-5
DATE 3-25-81
SHEET NUMBER

MW-1
BINDING ORDER 49

100A MAIN LUGS ONLY

PANEL "WAA" 208/120V - 3Ø-4W SURFACE MOUNTING

| REMARKS | WATTS | | | LTG. FIXT. REC. MISC. | OUTLETS | BKR. AMP. POLES | LTG. FIXT. REC. MISC. | WATTS | | | REMARKS |
|----------------------|-------------|----|----|-----------------------|---------|-----------------|-----------------------|-------|----|----|---------|
| | L1 | L2 | L3 | | | | | L1 | L2 | L3 | |
| SPARE | | | | | | | | | | | |
| SPACE | | | | | | | | | | | |
| SPACE | | | | | | | | | | | |
| TOTAL FEEDER WATTS = | SPARE PANEL | | | | | | | | | | |
| " " AMPS = | SPARE PANEL | | | | | | | | | | |

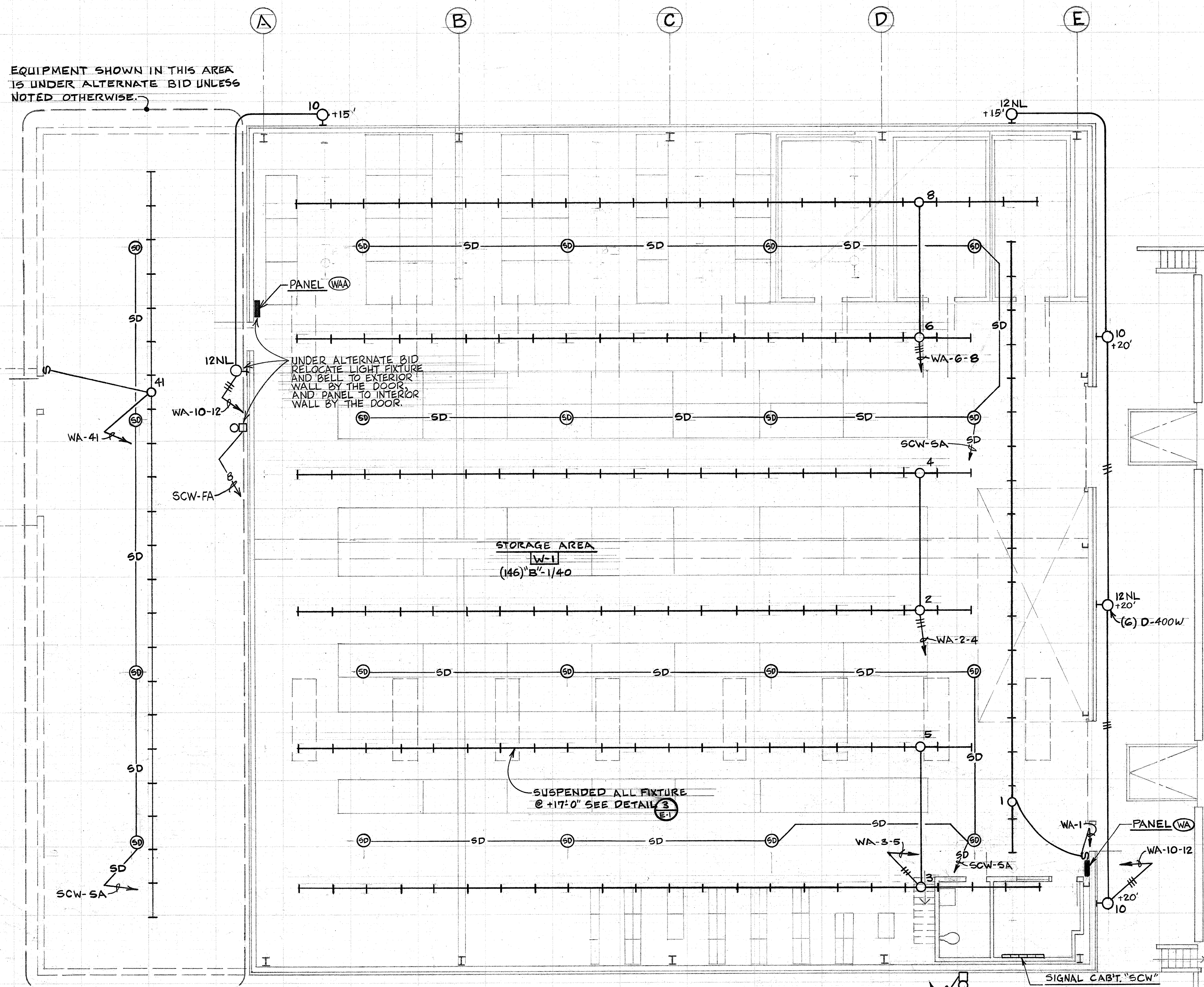
225A-3P MAIN BKR. 225A BUSES.

PANEL "WA" 208/120V - 3Ø - 4W SURFACE MOUNTING

| REMARKS | WATTS | | | LTG. FIXT. REC. MISC. | OUTLETS | BKR. AMP. POLES | LTG. FIXT. REC. MISC. | WATTS | | | REMARKS | |
|-----------------------------|-------|----|----|-----------------------|---------|-----------------|-----------------------|-------|----|----|---------|------------------|
| | L1 | L2 | L3 | | | | | L1 | L2 | L3 | | |
| WAREHOUSE | 900 | | | | | | | | | | | WAREHOUSE |
| WAREHOUSE | 1,200 | | | | | | | | | | | |
| OFFICE, TOILET | 480 | | | | | | | | | | | |
| OFFICE, TOILET | 720 | | | | | | | | | | | EXTERIOR |
| CHARGER | 3600 | | | | | | | | | | | 1500 EXTERIOR NL |
| FREEZER CONT | 3600 | | | | | | | | | | | SIGNAL CABT |
| SUMP PUMP | 700 | | | | | | | | | | | REFRIG & FREEZER |
| FREEZER UNIT | 2136 | | | | | | | | | | | 1000 DOOR HTR. |
| AC-1 | 1,040 | | | | | | | | | | | UH-15 & UH-16 |
| AC CONTROL | 500 | | | | | | | | | | | FREEZER CONT |
| WAREHOUSE | 540 | | | | | | | | | | | 1500 REFRIG CONT |
| TOTAL FEEDER WATTS = 46,090 | | | | | | | | | | | | |
| " " AMPS = 128 | | | | | | | | | | | | |

PROVIDE TOP CONTROL SECTION BEHIND SEPARATE LOCKABLE DOOR, MOUNT THE FOLLOWING.

- PARAGON #4003-005Z D.P.S.T. 24 HOUR SKIP-A-DAY TIME SWITCH CONTROLLING CKT #10
- PARAGON #4003-005Z D.P.S.T. 24 HOUR SKIP-A-DAY TIME SWITCH CONTROLLING CKT #12
- △ PARAGON #4003-005Z D.P.S.T. 24 HOUR SKIP-A-DAY TIME SWITCH CONTROLLING CKT #20



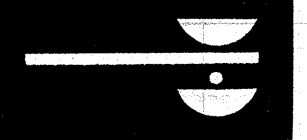
WAREHOUSE LIGHTING PLAN
SCALE: 1/8" = 1'-0"

AARON CARROLL INC.
CONSULTING ELECTRICAL ENGINEERS
1227 TEMPLE STREET
LOS ANGELES, CALIF. 90026
TELEPHONE: (213) 628-0808

JOB NO. 7611-5
DATE 3-25-81
SHEET NUMBER
EW-1
BINDER ORDER 58

Aaron Carroll

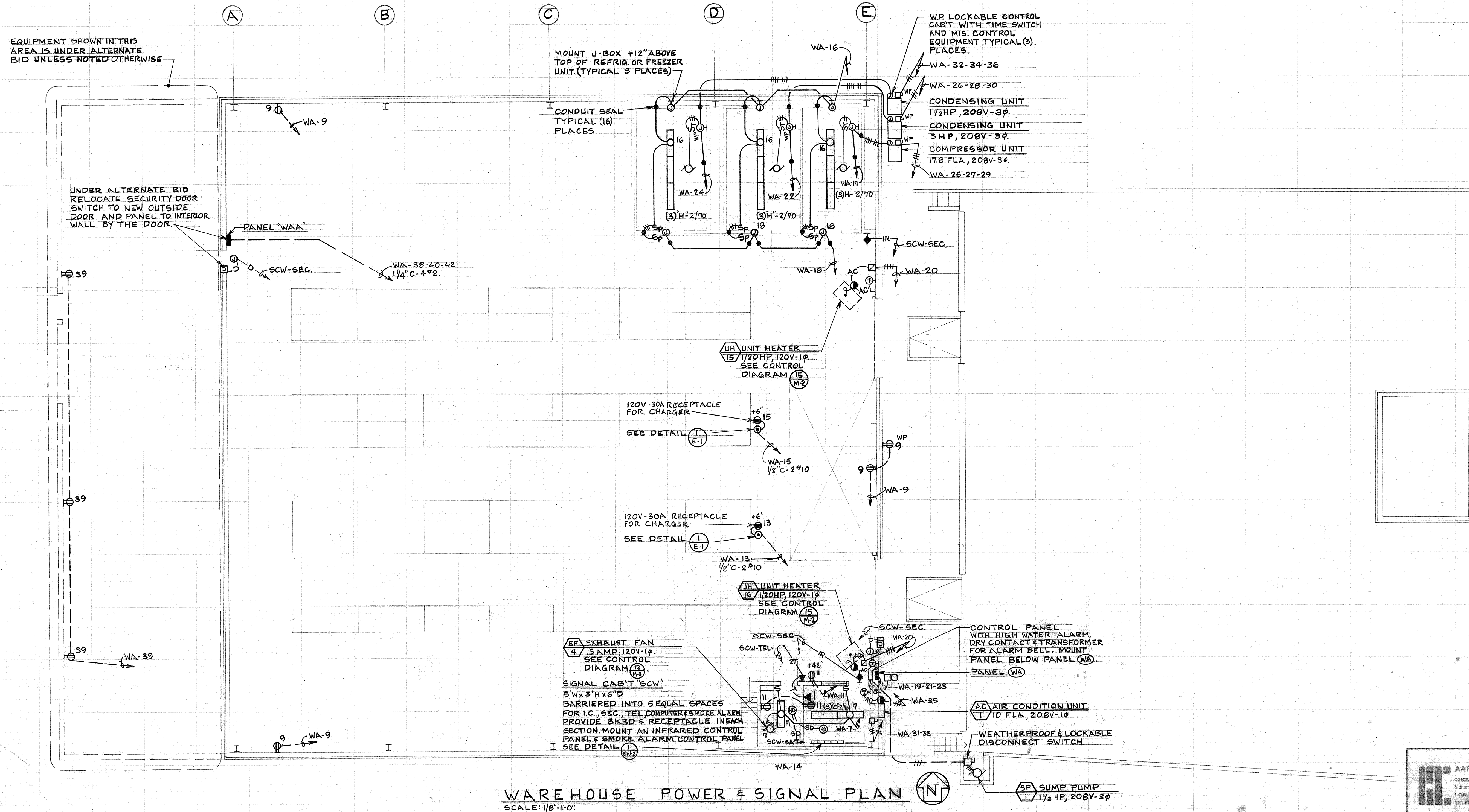
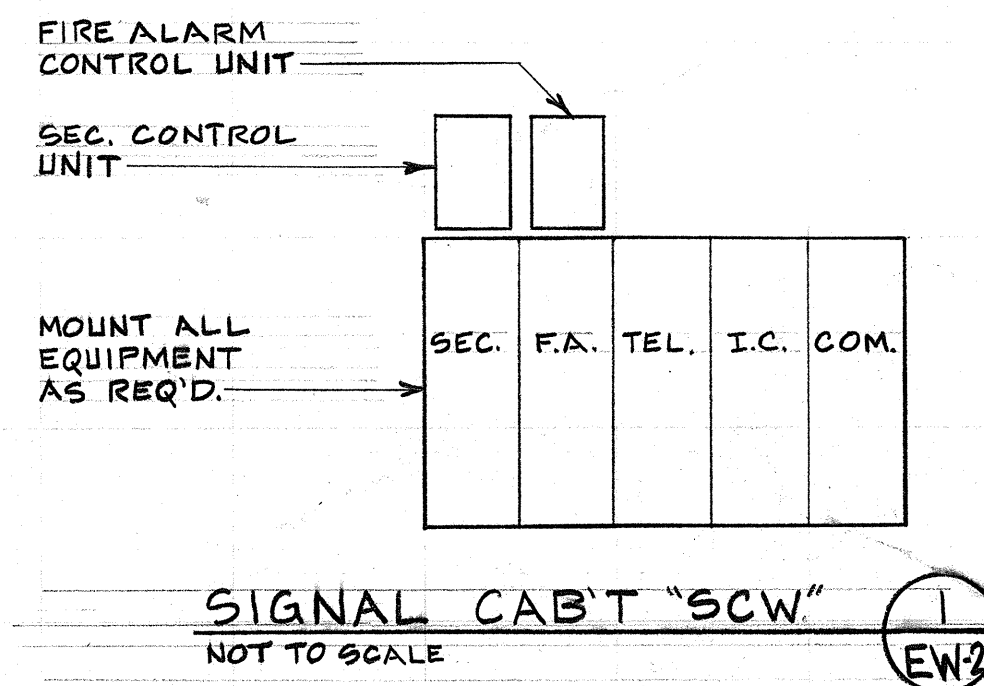
CARROLL ELECTRICAL A.I.A.



SCHOOL DISTRICT SHOPS
MAINTENANCE - TRANSPORTATION - WAREHOUSE
FOR
CHINO UNIFIED SCHOOL DISTRICT
CHINO CALIFORNIA

DEPT. OF GEN. SERVICES
FIRE MARSHAL

11/78 DIETRICH-POST CLEARPRINT 1000H-S



WAREHOUSE POWER & SIGNAL PLAN
SCALE: 1/8"=1'-0"

AARON CARROLL INC.
CONSULTING ELECTRICAL ENGINEERS
1227 TEMPLE STREET
LOS ANGELES, CALIF. 90026
TELEPHONE: (213) 628-0808

Aaron Carroll

JOB NO. 7611-5
DATE 3-25-81
SHEET NUMBER
EW-2
BINDING ORDER 59

SCHOOL DISTRICT SHOPS
MAINTENANCE - TRANSPORTATION - WAREHOUSE
FOR
CHINO UNIFIED SCHOOL DISTRICT
CALIFORNIA

CARRICHAEL-KEMP
A.I.A.

DEPT. OF GEN. SERVICES
FIRE MARSHAL

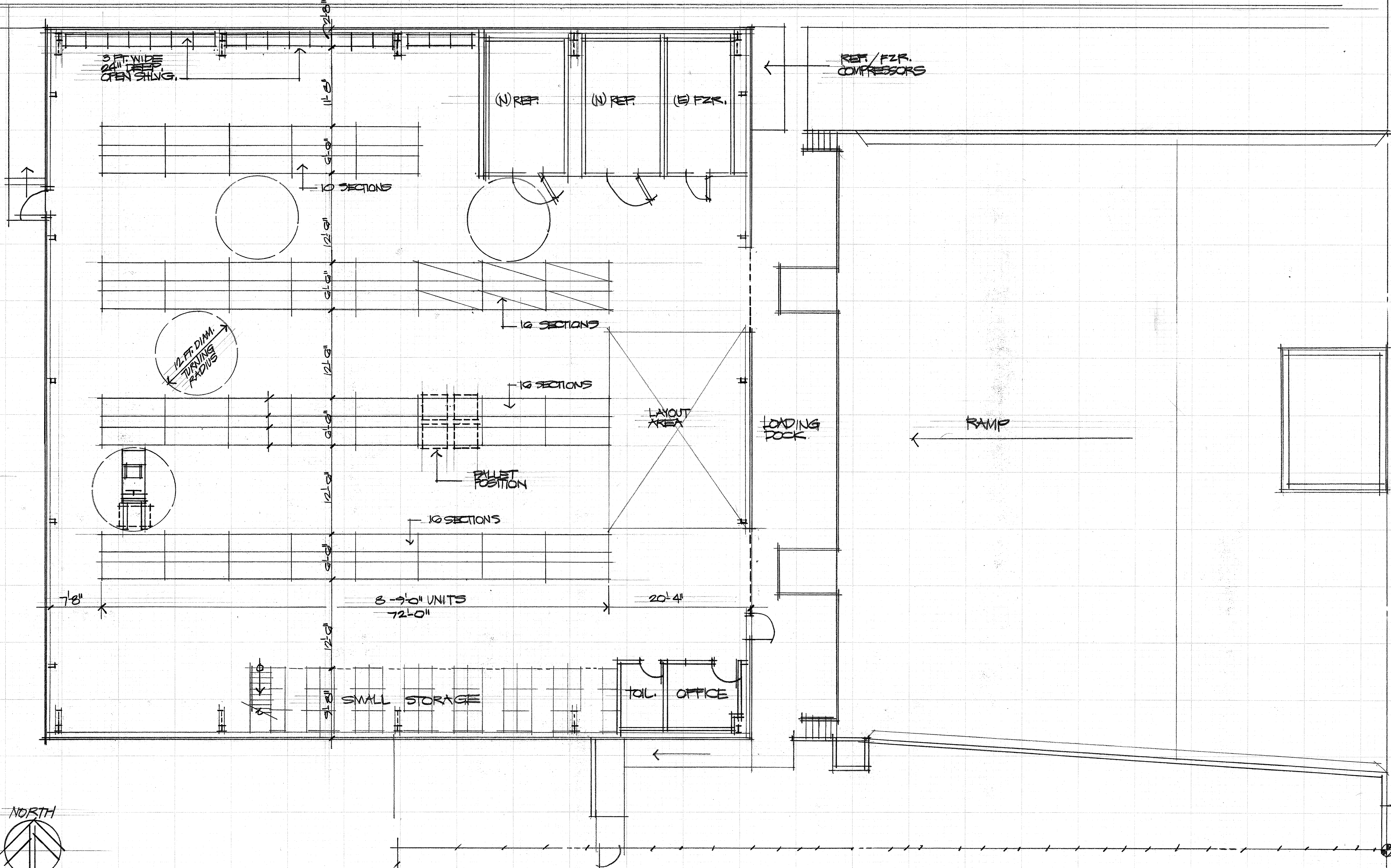
2870 LOS FELIZ PLACE - LOS ANGELES - 90066-1765



PALLET LAYOUT FOR 12 FT. FORK LIFT
WAREHOUSE BUILDING
CHINO UNIFIED SCHOOL DISTRICT - SHOP BUILDINGS
CALIFORNIA

JOB NO. 7911-3
DATE 6-3-81
SHEET NUMBER
X-AW-1
BINDING ORDER

DRIVEWAY

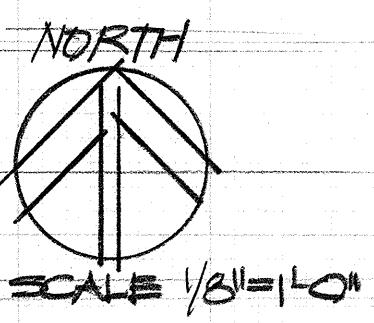


PALLET UNITS

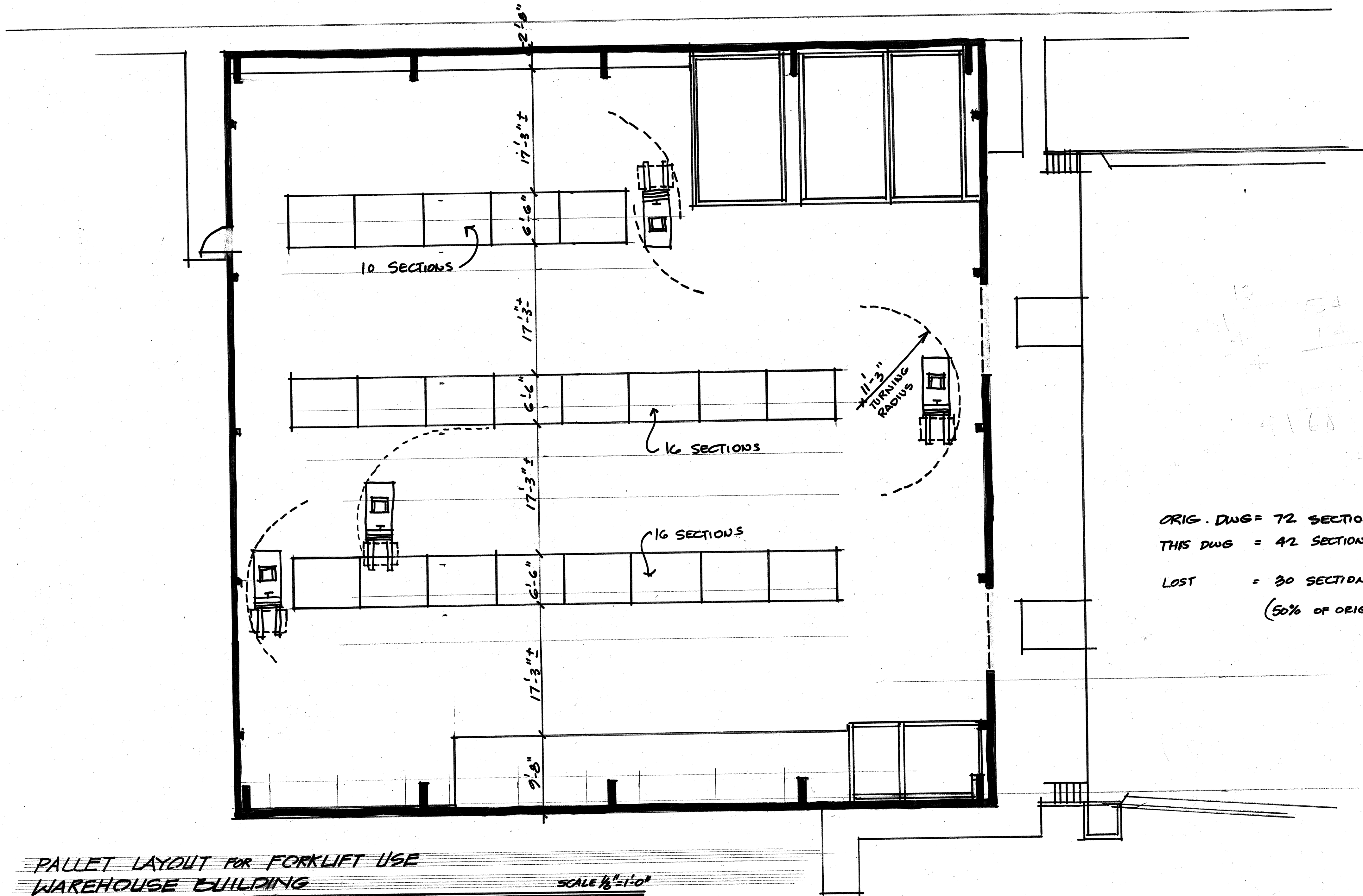
ORIG. DRWG. = 72 SECTIONS
 THIS DRWG. = 50 SECTIONS
 LOST = 14 SECTIONS
 (20% OF ORIG.)

OPEN SHELVING (NEAR FLRS.)

ORIG. DRWG. = 2 SECTIONS
 (18 L.F.)
 THIS DRWG. = 18-8' SECTIONS
 (54 L.F.)
 GAIN = 12 SECTIONS
 (36 L.F.)



FLOOR PLAN



ORIG. DWG = 72 SECTIONS
 THIS DWG = 42 SECTIONS
 LOST = 30 SECTIONS
 (50% OF ORIG)

**PALLET LAYOUT FOR FORKLIFT USE
WAREHOUSE BUILDING**

SCALE 1/8" = 1'-0"

CHINO UNIFIED SCHOOL DISTRICT - SHOP BUILDINGS
 CHINO CALIFORNIA
 GARMICHAEL-KEMP ARCHITECTS 6-5-81